

Type		$V_{DRM}$ $V_{RRM}$	$I_{TAV}$ $T_K = 55^\circ C$	$I_{TSM}$	$I^2t$ 10 ms 1/2 sine $V_R \leq 60\% V_{RRM}$	$V_{TO}$	$r_T$ @ $T_{JM}$	$T_{JM}$	$R_{thJK}$		Fig. No.
Part No.	Old Part No.	V	A	A	A <sup>2</sup> s	V	mΩ	°C	180° Sine K/W	120° Rect. K/W	
➤ New											
N4085ZC080	N1600CH08	800	4085	64000	20.5 x 10 <sup>6</sup>	0.850	0.070	125	0.011	0.012	W13
N4085ZC120	N1600CH12	1200	4085	64000	20.5 x 10 <sup>6</sup>	0.850	0.070	125	0.011	0.012	W13
N4085ZD080	N/A	800	4085	64000	20.5 x 10 <sup>6</sup>	0.850	0.070	125	0.011	0.012	W46
N4085ZD120	N/A	1200	4085	64000	20.5 x 10 <sup>6</sup>	0.850	0.070	125	0.011	0.012	W46
N4151FC360	N1483CH36	3600	4151	54000	14.6 x 10 <sup>6</sup>	0.850	0.170	125	0.0065	0.0070	W15
N4151FC420	N1483CH42	4200	4151	54000	14.6 x 10 <sup>6</sup>	0.850	0.170	125	0.0065	0.0070	W15
N4151FD360	N1483DH36	3600	4151	54000	14.6 x 10 <sup>6</sup>	0.850	0.170	125	TBA	TBA	W48
N4151FD420	N1483DH42	4200	4151	54000	14.6 x 10 <sup>6</sup>	0.850	0.170	125	TBA	TBA	W48
N4400TC120	N1863CH12	1200	4400	54000	14.6 x 10 <sup>6</sup>	0.900	0.100	125	0.008	0.009	W14
➤ N4400TC220	N1863CH22	2200	4400	54000	14.6 x 10 <sup>6</sup>	0.900	0.100	125	0.008	0.009	W14
N4400TC280	N1863CH28	2800	4400	54000	14.6 x 10 <sup>6</sup>	0.900	0.100	125	0.008	0.009	W14
N4400TD120	N1863DH12	1200	4400	54000	14.6 x 10 <sup>6</sup>	0.900	0.100	125	0.008	0.009	W51
➤ N4400TD220	N1863DH22	2200	4400	54000	14.6 x 10 <sup>6</sup>	0.900	0.100	125	0.008	0.009	W51
N4400TD280	N1863DH28	2800	4400	54000	14.6 x 10 <sup>6</sup>	0.900	0.100	125	0.008	0.009	W51
N4803FC300	N1683CH30	3000	4803	60000	18.0 x 10 <sup>6</sup>	0.920	0.110	125	0.0065	0.0070	W15
N4803FC350	N1683CH35	3500	4803	60000	18.0 x 10 <sup>6</sup>	0.920	0.110	125	0.0065	0.0070	W15
N4803FD300	N/A	3000	4803	60000	18.0 x 10 <sup>6</sup>	0.920	0.110	125	TBA	TBA	W48
N4803FD350	N/A	3500	4803	60000	18.0 x 10 <sup>6</sup>	0.920	0.110	125	TBA	TBA	W48
N5177FC200	N1883CH20	2000	5177	67500	22.8 x 10 <sup>6</sup>	0.800	0.100	125	0.0065	0.0070	W15
N5177FC280	N1883CH28	2800	5177	67500	22.8 x 10 <sup>6</sup>	0.800	0.100	125	0.0065	0.0070	W15
N5177FD200	N/A	2000	5177	67500	22.8 x 10 <sup>6</sup>	0.800	0.100	125	TBA	TBA	W48
N5177FD280	N/A	2800	5177	67500	22.8 x 10 <sup>6</sup>	0.800	0.100	125	TBA	TBA	W48
N5946FC180	N1983CH18	1800	5946	72000	25.9 x 10 <sup>6</sup>	0.855	0.065	125	0.0065	0.0070	W15
N5946FC220	N1983CH22	2200	5946	72000	25.9 x 10 <sup>6</sup>	0.855	0.065	125	0.0065	0.0070	W15
N5946FD180	N/A	1800	5946	72000	25.9 x 10 <sup>6</sup>	0.855	0.065	125	TBA	TBA	W48
N5946FD220	N/A	2200	5946	72000	25.9 x 10 <sup>6</sup>	0.855	0.065	125	TBA	TBA	W48
➤ NX037VC200	N/A	2000	2102	In Development							W12
➤ NX037VC260	N/A	2600	2102								W12
➤ NX037VF200	N/A	2000	2102								W62
➤ NX037VF260	N/A	2600	2102								W62



Outlines on pages O-01...O-24



W8 Weight 70 g



W9 Weight 90 g



W10 Weight 340 g



W11 Weight 510 g



W12 Weight 1000 g



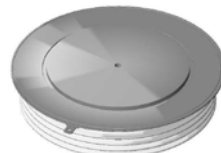
W13 Weight 1700 g



W14 Weight 1300 g



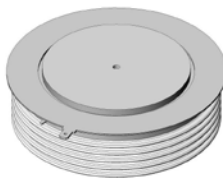
W15 Weight 2800 g



W46 Weight 1200 g



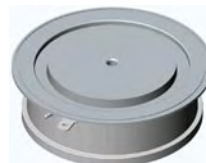
W48 Weight 2000 g



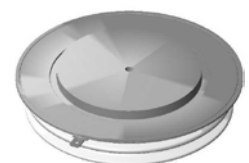
W51 Weight 1700 g



W60 Weight 340 g



W61 Weight 510 g



W62 Weight 1000 g